

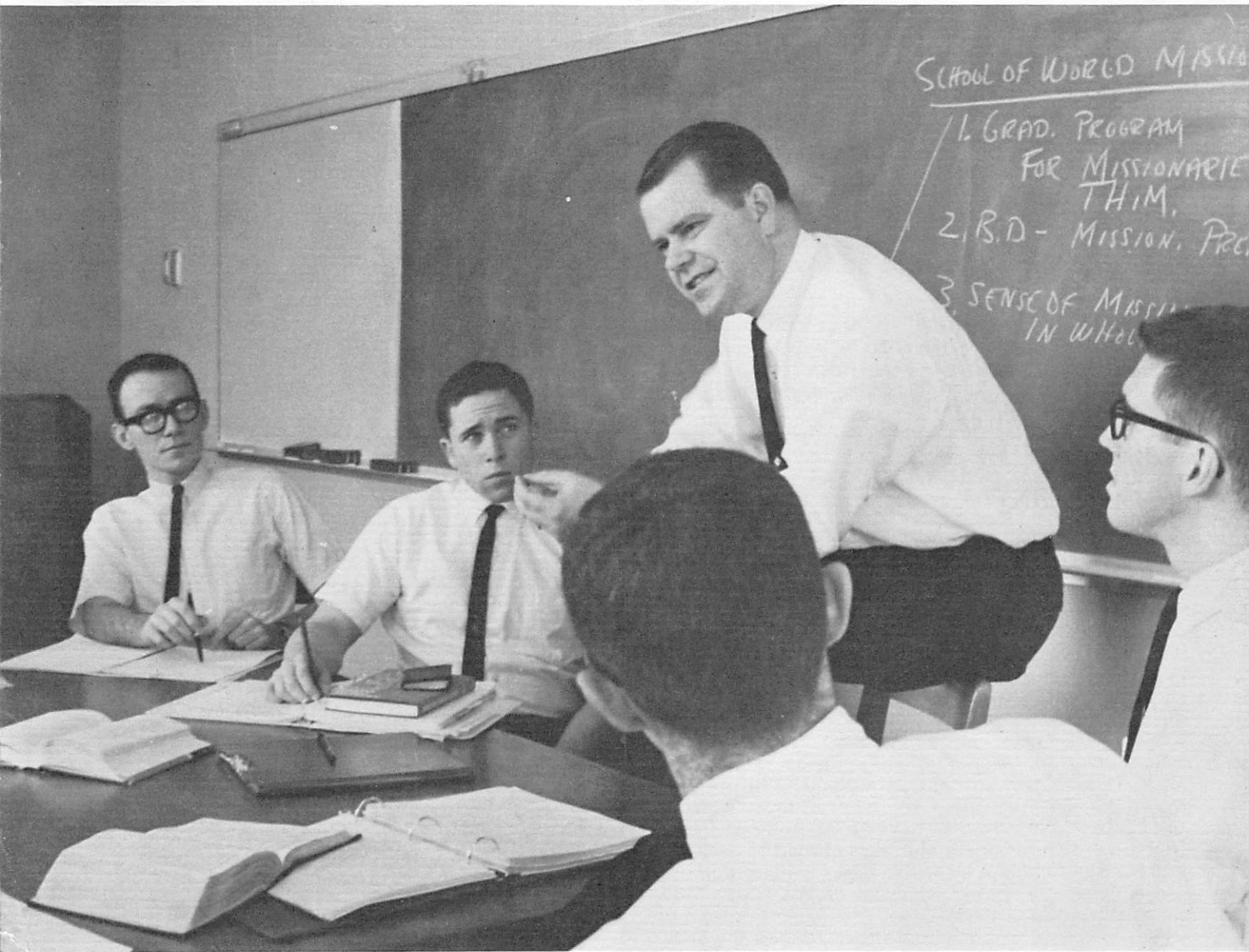
"The Spirit of
the Lord is upon
me to preach
the Gospel."

Isaiah 61:1



Bulletin of

FULLER THEOLOGICAL SEMINARY



FULLER SEMINARY ANNOUNCES NEW GRADUATE SCHOOL OF WORLD MISSION

President David Allan Hubbard of Fuller Seminary announced that the Seminary would launch a Graduate School of World Mission in September, 1965. Commenting upon the new program, President Hubbard said, "We are planning a three-pronged approach to the task of training men and women for the world-wide mission of the Church. First, a graduate program will provide advanced studies for the

seasoned missionary. Second, a variety of courses will be available for the student preparing for overseas service. Third, the entire academic program will feel the force of the emphasis on evangelism as the prime responsibility of the Church."

A committee of missionary leaders and educators, until recently chaired by the late Dr. R. Kenneth Strachan of the Latin America Mission, has adopted the following objectives for the new School at Fuller:

- 1) Prepare men to fulfill the Great Commission in

(Continued on page 3)



Featured in a special concert and rally at the Fuller Mount Hermon Conference on Saturday at 3 p.m., will be the Old Fashioned Revival Hour Choir, under the direction of Dr. H. Leland Green. The Choir will present a varied program of hymns and Gospel songs, with the soloists regularly heard on the broadcast.

WORLD MISSION (from page 1)

the midst of change peculiar to our age. 2) Provide a theology of missions for all seminary students looking toward a pastorate. 3) Bring Christian nationals to the school as students and teachers to provide opportunities for mutual exchange. 4) Develop a team of research specialists to study and provide a center of thought and information regarding World Mission.

The missionary vision and leadership of Evangelist Billy Graham; Fuller Board Chairman, H. J. Ockenga; and Fuller Seminary Founder, Charles E. Fuller is reflected in the Board decision to launch the Missions School in 1965. Evangelist and Fuller trustee, Billy Graham declared, "A school on a graduate level providing training and instruction exclusively and directly related to the task of World Evangelism is one of the most urgent needs of this hour."

An international steering committee of missionary leaders has been formed to guide Fuller in the launching of the new school. Committeemen are: ✓ Horace L. Fenton, Chairman, (Latin America Mission); ✓ Raymond B. Buker, (Conservative Baptist Seminary, Denver); George Cowan, (Wycliffe Bible Translators); Ted W. Engstrom, (World Vision); ✓ Eric Fife, (Inter-Varsity Christian Fellowship); Clarence Jones, (World Radio Missionary Fellowship); Donald A. McGavran (Institute of Church Growth); Samuel Moffett, (Presbyterian Board of Foreign Missions); ✓ Paul Rees, (World Vision); Jack Shepherd, (Nyack Missionary College); ✓ Abe Van Der Puy, (Station HCJB, Ecuador); Warren Webster, (Conservative Baptist Mission, Pakistan); ✓ Christy Wilson, Jr., (Presbyterian Mission, Afghanistan); and C. Stacey Woods, (The International Fellowship of Evangelical Students.)

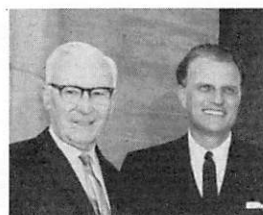
It is expected that an announcement of key faculty appointments to the new missions school will be made within 60 days. Inquiry regarding enrollment should be directed to the Registrar, Fuller Theological Seminary, 135 North Oakland Avenue, Pasadena, California, 91101.

DR. JAMES I. PACKER, Director of Latimer House, Oxford, England, will bring the Payton Lectures May 11-14 on the theme "Forms of Universalism in Modern Theology." The Payton Lectures are named for **DR. AND MRS. JOHN E. PAYTON**, parents of **MRS. CHARLES E. FULLER**. Visiting lecturers in Homiletics for the year 1965-66 are **DR. ROBERT SCHAPER**, minister of the Bethany Church, Sierra Madre, California; the **REV. THOMAS ERICKSON**, minister of the First Covenant Church of Los Angeles; and **REV. PAUL LARSEN**, minister of the Evangelical Covenant Church, Pasadena. Fuller Registrar, **MARY ASHLEY**, reports that 104 students have applied for enrollment at Fuller next fall. Fuller Placement Director, **ROY BREWER**, indicated that 62 seniors will graduate in June, 1965, and 46 of the 62 graduates have accepted church, missionary or graduate work responsibilities. 19 have accepted positions in churches — 15 will enter graduate school — 5 have accepted assignments as missionaries—two will enter Christian camp work. Recent Chapel speakers include: **DR. CHARLES HUMMEL** President-elect of the Barrington College in Rhode Island; **REV. BUD S. SCHAEF-**

FER, Fuller '55, Overseas Crusades; **REV. SIDNEY LANGFORD** of the Africa Inland Mission; **DR. DONALD HOKE**, President of Japan Christian College; **REV. WALTER FRANK**, General Director of the Greater Europe Mission; **DR. ARTHUR HOLMES**, Professor of Philosophy at Wheaton College; **REV. GEORGE INADOMI**, Fuller '55, Minister of the Church of Christ, Presbyterian, Chicago; **DR. ARTHUR GLASSER**, Overseas Missionary Fellowship; and **DR. CHARLES E. FULLER**. **DR. DONALD F. TWEEDIE**, Director of the Pasadena Community Community Counseling Center, has visited the following colleges, contacting prospective students for enrollment in Fuller's new Graduate program in Clinical Psychology: Gordon College, Barrington College, King's College, Nyack Missionary College, Bethel College, Macalester College, Hope College, Calvin College, and Northwestern College. **DR. DANIEL P. FULLER** recently participated in a panel discussion of the American Academy of Religion at Pomona College. Eerdman's Publishing House will release **DR. EDWARD JOHN CARNELL'S** new book, *The Burden of Soren Kierkegaard*, in early summer.

1965 COMMENCEMENT WEEK SCHEDULE:

- Baccalaureate May 30, 11:00 a.m.
First Baptist Church, Pasadena, Rev. Richard P. Langford, First Presbyterian Church of Hollywood; Speaker.
- Alumni Luncheon June 1, 12:00 noon
Huntington-Sheraton Hotel, Pasadena. Dr. Harold Englund, minister of the First Presbyterian Church, Berkeley; Speaker.
- Commencement June 1, 7:30 p.m.
First Congregational Church, Pasadena; Dr. Stuart B. Babbage, Th.D., Ph.D., Anglican clergyman of Australia, Guest Professor at Columbia Theological Seminary; Speaker.



Picture taken at the unveiling of a plaque on February 1, 1965, commemorating the record attendance at the Coliseum on September 8, 1963, during the Los Angeles Crusade. Dr. Charles Fuller reported progress of Fuller's new School of World Mission to Trustee Billy Graham following the service in the Coliseum.

THE SCHOOL OF WORLD MISSION AND INSTITUTE OF CHURCH GROWTH

at
Fuller Theological Seminary
Pasadena, California

David Allan Hubbard, President
Donald McGavran, Dean

I. Advanced Training in Missions is Desirable

Missionary Enterprise Rapidly Growing

Evangelical missionaries are increasing in number. Protestant missionaries in 1960 numbered 42,000; in 1925, 29,000; and in 1910, 21,000. Despite some closed doors, the number increases year by year. Afericasian church sendings will increase the missionary force still more. No decline is in view. Difficulties encountered today are far fewer than those of 100 years ago. The Church should train many more missionaries than she ever has before and train them to be more effective.

Vast Increments in Knowledge

Sciences of man are adding daily to our knowledge of how men and societies function, grow, change, and develop. Technology advances by leaps and bounds, and much has significance for Christian mission. Radio is playing a notable part in propagating the Christian religion. Ease of communication has revolutionized missionary operations in lands difficult of access - weeks by foot, minutes by plane. The Church's tremendous experience in discipling and perfecting can now become the common possession of all who wish to study it. Advanced training should aim to make as much of the new knowledge available as possible.

Shift in Structure of World Power

Scores of self-governing States have arisen. Over a billion people

have become their own masters. Rise of independent Afericasian Churches, paralleling that of Afericasian States necessitates a new mode of missions - hopefully more effective in multiplying churches than the old. Spread of tyrannical governments (communism) hampers missions in some lands but in others creates changes which advance the Gospel. Revolution of rising expectations and the age of the common man have created eagerness for change. The population explosion is placing enormous numbers of eager young people in orbit.

Missionary training should prepare churchmen to disciple the nations in the complex world with this power orientation. Advanced training in Christian mission is essential equipment for all missionaries.

II. The purpose of the School of World Mission and Institute of Church Growth (SWM-ICG) is to provide advanced missionary training which:

Welcomes missionaries of all boards and all Churches.

Rests on biblical understanding of Christian mission.

Speaks to today's world and faces tomorrow's probabilities in mission.

Avoids religious relativism, universalism, mere aid to permanently dependent Churches, humanitarianism as a sufficient goal of missions, and "mission work" as a good end in itself.

Concentrates attention on propagating the Christian religion:

through preaching the Gospel in resistant populations,

through multiplying churches in responsive populations,

believing that, while both are commanded, if only one can be done, the latter has a higher priority.

Emphasizes research in mission as an important and until now largely unused key to advance.

Teaches bold, clear plans for church-planting evangelism.

Learns through systematic and sustained study how the sciences of man, technologies, and knowledge of other religions may be used to improve discipling and perfecting.

Studies the history of the expansion of the Church, particularly that expansion since 1800 in Asia, Africa, and Latin America, in order to cast light on effectiveness in reconciling men to God.

Counts Afericasian Churches as fellow laborers in reconciling unbelievers to God.

Invites Afericasians to lecture and teach in SWM.

Offers Fellowships to them.

Conducts seminars in Afericasia.

Is founding an International House - a global meeting place for leaders of Afericasian communions.

III. Staff and Resources

SWM-ICG now has a staff of five - two full-time and three part-time teachers, each from a different part of the world.

SWM-ICG's program calls for adding one full-time teacher and one assistant or associate teacher to the staff each year for the next several years.

The ecumenical atmosphere brings missionary scholars from many denominations together each year.

The research facilities of SWM-ICG keeps attention centered on the main purpose of biblical missions - proclaiming Christ and persuading men to be His disciples and responsible members of His Church - and providing light on most missionary situations.

The missions library at SWM-ICG at Fuller, one of the best in the United States, is adequate for advanced study, and is being increased at the rate of \$10,000 a year.

The publication program (the Missionary Monograph and the Church Growth Series) provides contemporary comment on the fast-changing task of world mission.

IV. Courses

The courses in the dynamics of Christian mission formerly taught at the Institute of Church Growth in Oregon are being carried over to Pasadena - Principles and Procedures in Church Growth, Anthropology and Mission, Animism and Church Growth, Case Studies in Church Growth, Research Seminars, Reading and Conference along lines of special interest.

Advanced courses in the history, theology, and methodology of the world mission, its biblical imperative, changes required by the modern world, the ethnic religions, and the ecumenical movement and world mission, will be added in 1966.

Missionaries on furlough may also take advantage of the excellent courses in church history, New Testament, Old Testament, evangelism, theology, Christian education, and the like, taught by notable scholars in the seminary.

V. Costs

Tuition will cost \$21 per quarter hour. A full load of 12 hours will cost \$250.

Board and room in the seminary dormitories and dining hall will cost \$12.25/week
\$4.65-\$7.20 per
and week respectively for single men and women.

Married families on missionary salary and with cars are advised to secure furnished quarters in the area, according to their preference.

VI. Inquiries and Applications

The 1964-65 catalog does not, of course, describe the newly founded School of World Mission and Institute of Church Growth. The new catalog will.

Until January, 1966, please address all inquiries and applications for admission to Dean Donald McGavran

School of World Mission and Institute of Church Growth
135 North Oakland Avenue
Pasadena, California 91101